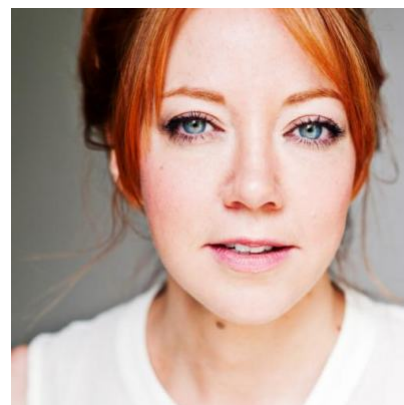


## Diane Morgan

### Writer / Performer

Diane is a BAFTA nominated actor, writer and director.

Diane created, writes, directs and stars in comedy narrative 'Mandy'. Following the success of the pilot that aired in 2019 a full series was commissioned and aired on BBC Two in August 2020, it was the highest rated comedy on the channel that summer. The second series was equally as successful and the BBC commissioned a third.



## Agents

Carly Peters

cpeters@unitedagents.co.uk  
0203 214 0985

Maureen Vincent

Assistant

Fathima Abdullah

fabdullah@unitedagents.co.uk

Assistant

Maddie Coelho

MCoelho@unitedagents.co.uk  
0203 214 0772

## Credits

### In Development

| Production                           | Company              | Notes            |
|--------------------------------------|----------------------|------------------|
| <b>UNITITLED BBC PROJECT</b><br>2023 | Boffola / Witchcraft | Writer + Creator |
| <b>DEVILS TEMP</b><br>2023           | Sky / Witchcraft     | Writer + Creator |

### Television

| Production | Company | Notes |
|------------|---------|-------|
|------------|---------|-------|

|                         |                                     |                              |
|-------------------------|-------------------------------------|------------------------------|
| <b>MANDY Series 2</b>   | BBC Studios / Witchcraft Industries | Creator, Writer and Director |
| <b>MANDY</b>            | BBC Studios / Witchcraft Industries | Creator, Writer and Director |
| <b>MANDY (Pilot)</b>    | BBC Studios                         | Writer and Director          |
| <b>MANDY S3</b><br>2023 | BBC Studios / Witchcraft Industries | Creator, Writer and Director |

## Radio

| <b>Production</b>                         | <b>Company</b>       | <b>Notes</b>                               |
|---|----------------------|--|
| <b>OUT TO LUNCH</b>                       | Avalon / BBC Radio 2 | Dir: Shaun Parry                           |
| <b>The Comedy Club Interviews</b>         | BBC Radio 4 Extra    | Regular contributor                        |
| <b>TWO EPISODES OF MASH</b>               | BBC Radio 2          | 4 x 30' episodes<br>Prod: Clair Wordsworth |
| <b>TWO EPISODES OF MASH Series 2</b>      | BBC Radio 4          | 4 x 30' episodes<br>Prod: Clair Wordsworth |
| <b>WHACK MY BUSH PODCAST</b><br>(various) |                      | Sketch show                                |
| <b>TWO EPISODES OF MASH</b>               | BBC Radio 2          | Writer - performer 1 x 30 pilot            |

## Theatre

| <b>Production</b>           | <b>Company</b>                                | <b>Notes</b> |
|-----------------------------|---|--------------|
| <b>TWO EPISODES OF MASH</b> | Pleasance Theatre - Edinburgh Fringe Festival | Writer       |