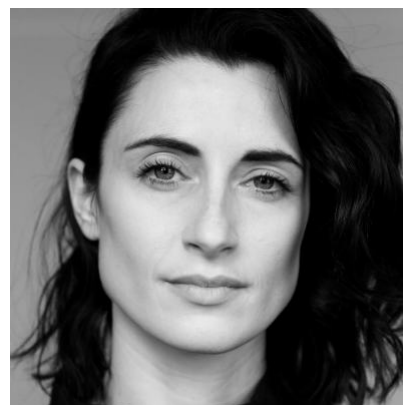


## Natasha O'Keeffe

### Actor

Natasha trained at the Royal Welsh College of Music and Drama.

[Showreel](#)



### Agents

Lucia Pallaris

lpallaris@unitedagents.co.uk

+44 (0) 20 3214 0909

Associate Agent

Eleanor Kirby

ElKirby@unitedagents.co.uk

### Roles

#### Television

Production	Character	Director	Company
<b>WHEEL OF TIME (Series 2)</b>		Rafe Judkins	Amazon
<b>INTERGALACTIC</b>	Emma Grieves	Kieron Hawkes   China Moo-Young	SKY
<b>PEAKY BLINDERS Series 5</b>	Lizzie Shelby	Anthony Byrne	BBC
<b>LETHAL WHITE</b>	Charlotte Ross	Susan Tully	BBC
<b>INTERGALACTIC</b>	Emma	Various	Tiger Aspect/ Sky One
<b>PEAKY BLINDERS Series 4</b>	Lizzie	Tim Mielants	BBC
<b>THE STRIKE SERIES: THE CUCKOO'S CALLING</b>	Charlotte	Michael Keillor   Charles Sturridge	BBC
<b>REBELLION II</b>	Agnes	Catherine Morshead	Between State Film Productions
<b>WILL</b>	Ann Shakespeare	Shekhar Kapur   Craig Pearce	TNT
<b>PEAKY BLINDERS Series 3</b>	Lizzie	Tim Mielants	BBC
<b>JEKYLL AND HYDE</b>	Fedora	Colin Teague	ITV

Production	Character	Director	Company
<b>BARBARIANS; THE LAST PANTHER</b>	KIRSTY	Johan Renck	Warp Films
<b>SHERLOCK</b>	EMILIA RICOLETTI	Douglas MacKinnon	BBC
<b>GRANTCHESTER</b>	Grace Heath	Tim Fywell	Lovely Day for ITV
<b>PEAKY BLINDERS Series 2</b>	Lizzie	Tom Harper	BBC
<b>LIP SERVICE</b>	Sadie Anderson	Various	Kudos
<b>MISFITS - Series 5</b>	Abby	Various	E4
<b>LAW &amp; ORDER UK - series 4 Ep 6</b>	Connie Moran	Joss Agnew	Kudos
<b>PEAKY BLINDERS</b>	Lizzie Stark	Tom Harper	Tiger Aspect for BBC 2
<b>MISFITS - series 4</b>	Abby	Various	E4
<b>SATISFACTION</b>	Alex	Dusan Lazarevic	Eat Me Productions
<b>LIP SERVICE series 1 and series 2</b>	Sadie	John McKay	BBC3

## Film

Production	Character	Director	Company
<b>CLICQUOT</b>	Anne	Thomas Napper	Fourth & Twenty Eight Films
<b>SVENGALI</b>	Natasha	John Hardwick	Root Films
<b>FILTH</b>	Anna	Jon Baird	Steel Mill Pictures

## Stage

Production	Character	Director	Company
<b>SPLENDOUR</b>	Micheleine	Tom Daley	RWCMD
<b>KINDERTRANSPORT</b>	Faith	Caroline Leslie	RWCMD
<b>THE IMPORTANCE OF BEING EARNEST</b>	Gwendolen	Martin Houghton	RWCMD
<b>AS YOU LIKE IT</b>	Rosalind	Giles Block	RWCMD

## Other

Production	Character	Director	Company
<b>OASIS, FALLING DOWN</b>		W. I. Z	Factory Films