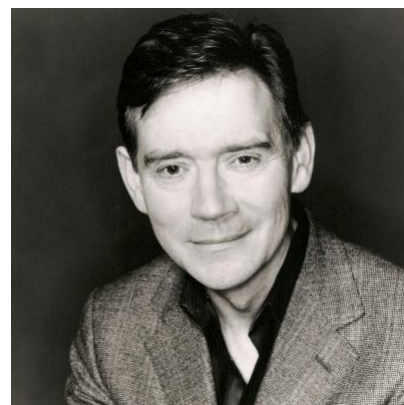


## Anthony Andrews



### Agents

Lindy King Associate Agent  
Tessa Schiller  
tschiller@unitedagents.co.uk  
020 3214 0800

Assistant  
Katie Rae  
krae@unitedagents.co.uk  
020 3214 0800

### Roles

#### Film

Production	Character	Director	Company
<b>THE PROFESSOR AND THE MADMAN</b>	Benjamin Jowett	Farhad Safinia	Icon Entertainment International
<b>THE KINGS SPEECH</b>	Stanley Baldwin	Tom Hooper	Bedlam Productions
<b>HAUNTED</b>	Robert Mariell	Lewis Gilbert	Double A Pictures
<b>LOST IN SIBERIA</b>	Miller	Alexander Mitta	Spectator Entertainment
<b>THE LIGHT HORSEMEN</b>	Meinertzhagen	Simon Wincer	RKO Pictures
<b>UNDER THE VOLCANO</b>	Hugh Firmin	John Huston	20th Century Fox
<b>SECOND VICTORY</b>	Major Mark Hanlon	Gerald Thomas	AIP Studios
<b>THE HOLOCROFT CONVENTION</b>	Johan	Jack Frankenheimer	Thorn EMI
<b>MISTRESS OF PARADISE</b>	Buckley	Peter Medak	
<b>OPERATION DAYBREAK</b>	Joseph Gabchick	Lewis Gilbert	Warner Bros

<b>Production</b>	<b>Character</b>	<b>Director</b>	<b>Company</b>
<b>A WAR OF CHILDREN</b>	Reg	George Shaffer	CBS Entertainment
<b>HANNAH'S WAR</b>	McCormack	Menahem Golan	Media Home Entertainment
<b>TAKE ME HIGH</b>	Hugo Flaxman	David Askey	

## Television

<b>Production</b>	<b>Character</b>	<b>Director</b>	<b>Company</b>
<b>THE ENGLISH GAME</b>	Lord Kinnaird	Various	Netflix
<b>THE SYNDICATE</b>	Lord Hazelwood	Kay Mellor/Dominic Leclerc/Syd Macartney	Rollem Productions/BBC One
<b>BIRDSONG</b>	Colonel Barclay	Philip Martin	Working Title TV
<b>SCREEN TWO</b>	Christopher Edwardes / Robin	Various	BBC
<b>RUTH RENDELL MYSTERIES</b>	Luke Crossland	Various	Blue Heaven Productions / PBS
<b>AGATHA CHRISTIE'S MARPLE</b>	Tommy Beresford	Peter Medak	Granada
<b>TALES FROM THE CRYPT</b>	Jonathan	Various	HBO
<b>COLUMBO</b>	Elliott Blake	Various	NBCUniversal
<b>A FINE ROMANCE</b>	Michael Trent	Various	ABC
<b>ROSEMARY &amp; THYME</b>	Richard Oakley	Simon Langton	Carnival Film & Television
<b>CAMBRIDGE SPIES</b>	King George VI	Tim Fywell	BBC
<b>LOVE IN A COLD CLIMATE</b>	Boy Dougdale	Thomas Hooper	BBC
<b>DAVID COPPERFIELD</b>	Mr Murdstone	Peter Medak	Yagenhill LTD
<b>MOTHERTIME</b>	Robin	Matthew Jacobs	BBC
<b>HEARTSTONES</b>	Luke	Peter Haggard	YTV
<b>THE LAWLORD</b>	Chris Edwards	Jimmy Goddard	BBC
<b>JEWELS</b>	William Witfield	Roger Young	NBC
<b>STRANGE CASE OF DR JEKYLL &amp; MR HYDE</b>	Jekyll & Hyde	Michael Lindsay Hogg	ABC
<b>SUSPICION</b>	Johnny Aysgarth		CBS
<b>HANDS OF A MURDERER</b>	Prof Moriarty		CBS
<b>BLUE GRASS</b>	Mr Fitzgerald	Simon Winner	20th Century Fox
<b>THE WOMAN HE LOVED</b>	King Edward VIII	Charles Jarrot	CBS
<b>A..D</b>	Nero	various	

<b>Production</b>	<b>Character</b>	<b>Director</b>	<b>Company</b>
<b>SPARLING CYANIDE</b>	Tony Brown	Robert Lewis	Warner Bros.
<b>IVANHOE</b>	Ivanhoe	Douglas Camfield	Rosemont Productions
<b>THE SCARLET PIMPERNEL</b>	Sir Percy Blakeney	Clive Donner	London Films
<b>BRIDESHEAD REVISITED</b>	Sabastian Flyte	Charles Sturridge	
<b>DANGER UXB</b>	Brian Ash	Ferdi Fairfax	Thames Television
<b>Z FOR ZACHARIA</b>	Loomis	Anthony Garner	BBC
<b>ROMEO AND JULIET</b>	Mercutio	Alvin Rakoff	BBC
<b>MUCH ADO ABOUT NOTHING</b>	Claudio	Donald McWhinie	BBC
<b>LONDON ASSURANCE</b>	Charles		BBC
<b>UPSTAIRS, DOWNSTAIRS</b>		Various	BBC
<b>UPSTAIRS, DOWNSTAIRS</b>		Various	BBC
<b>THE PALLISERS</b>	Lord Sivlerbridge	Hugh David & Ronald Wilson	BBC
<b>THE COUNTRY WIFE</b>	Horner	John Gorrie	BBC
<b>FRENCH WITHOUT TEARS</b>	Alan	John Gorrie	BBC
<b>THE FORTUNES OF NIGEL</b>	Sir Nigel Olifaunt	Peter Cregeen	BBC
<b>QB VII</b>	Stephen Kelno		BBC

## Stage

<b>Production</b>	<b>Character</b>	<b>Director</b>	<b>Company</b>
<b>BULLY BOY</b>	Major Oscar Hadley	Patrick Sandford	Nuffield Southampton
<b>SIR ANTHONY EDEN</b>	A Marvellous Year for Plums	Philip Franks	Chichester Festival Theatre
<b>VERTIGO</b>			Theatre Royal Windsor
<b>THE LETTER</b>	Howard Joyce	Alan Strachan	Wyndham Theatre
<b>WOMAN IN WHITE</b>	Count Fosco	Trevor Nunn	The Palace Theatre
<b>MY FAIR LADY</b>	Professor Henry Higgins	Trevor Nunn	Drury Lane Theatre
<b>GHOSTS</b>	Pastor Mandors	Robin Phillips	Comedy Theatre
<b>COMING IN TO LAND</b>	Neville	Peter Hall	The National Theatre
<b>ONE OF US</b>	Garonway Rees		Greenwich Theatre
<b>DRAGON VARIATIONS</b>	Douglas Blake		Duke of York's Theatre
<b>FORTY YEARS ON</b>	Skinner	Patrick Garland	Apollo Theatre

<b>Production</b>	<b>Character</b>	<b>Director</b>	<b>Company</b>
<b>A MIDSUMMER NIGHT'S DREAM</b>	Mustardseed		New Shakespeare Company
<b>ROMEO AND JULIET</b>	Balthasar		New Shakespeare Company

## Radio

<b>Production</b>	<b>Character</b>	<b>Director</b>	<b>Company</b>
<b>BBC CONCERT ORCHESTRA</b>			BBC Radio 2

## Other

<b>Production</b>	<b>Character</b>	<b>Director</b>	<b>Company</b>
<b>MY FAIR LADY</b>	Professor Henry Higgins		BBC Proms
<b>MY FAIR LADY</b>			The Northern Symphonia Orchestra
<b>THE LIVERPOOL PHILHARMONIC ORCHESTRA</b>			
<b>THE RTE ORCHESTRA</b>			Dublin Orchestra
<b>LERNER AND LOWE TRIBUTE CONCERT</b>			
<b>FROM BOADWAY TO WEST END</b>	Tribute to Bill Brohn concert		Drury Lane Theatre