

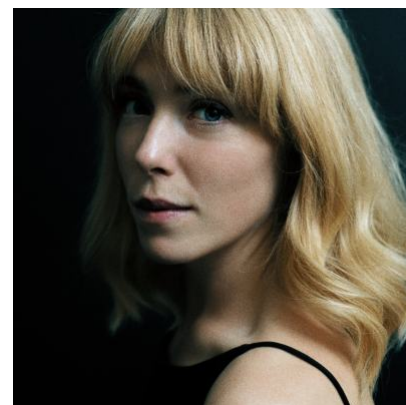
## Hannah Morrish

Ian Charleson Award Second Prize 2018 for Octavia in Antony and Cleopatra at the National Theatre

Ian Charleson Award Commendation 2017 for Lavinia in Titus Andronicus at the RSC

The Drama Centre London BA Acting 2012 - 2015

NYT REP Company 2012



Access Hannah's showreel [here](#) and link to Antony & Cleopatra scene [here](#)

## Agents

Jess Alford

JAOffice@unitedagents.co.uk

Associate Agent

Ellie Blackford

eblackford@unitedagents.co.uk

020 3214 0800

## Roles

### Television

Production	Character	Director	Company
<b>FATHER BROWN</b>	Pippa	Darcia Martin	BBC Studios
<b>CALL THE MIDWIFE</b>	Dorothy Whitmore	Sheree Folkson	Neal Street Productions for BBC1

### Stage

Production	Character	Director	Company
<b>THE CONFESSIONS</b>	Alice	Alexander Zeldin	A Zeldin Company
<b>THE MERCHANT OF VENICE 1936</b>	Portia	Brigid Larmour	Watford Palace Theatre/RSC/Criterion Theatre

<b>Production</b>	<b>Character</b>	<b>Director</b>	<b>Company</b>
<b>DARKEST PART OF THE NIGHT</b>	Anna	Nancy Medina	Kiln Theatre
<b>CANCELLING SOCRATES</b>	Xanthippe	Tom Littler	Jermyn Street Theatre
<b>HOLE</b>	Hole	Emma Butler	Jermyn Street Theatre
<b>RENAISSANCE</b>	Lucrezia Borgia	Emma Butler	Sotto Voce
<b>ALL'S WELL THAT ENDS WELL</b>	Helena	Tom Littler	Guildford Shakespeare Company & Jermyn St Theatre
<b>ANTONY AND CLEOPATRA</b>	Octavia	Simon Godwin	National Theatre
<b>CORIOLANUS</b>	Virgilia	Angus Jackson	RSC
<b>TITUS ANDRONICUS</b>	Lavinia	Blanche McIntyre	RSC
<b>JULIUS CAESAR</b>	Portia	Angus Jackson	RSC
<b>ARMS AND THE MAN</b>	Raina	Brigid Larmour	Watford Palace Theatre
<b>FLOWERING CHERRY</b>	Judy Cherry	Benjamin Whitrow	Troupe in association with Neil McPherson for the Finborough Theatre
<b>GOODNIGHT CHILDREN EVERYWHERE</b>	Ann	Jonathan Humphreys	Drama Centre
<b>MACBETH</b>	Lady Macbeth	Lawrence Evans	Drama Centre
<b>MADNESS IN VALENCIA</b>	Erifilia	Annie Tyson	Drama Centre
<b>A LITTLE HOTEL ON THE SIDE</b>	Violette	Lindsay Posner	Theatre Royal Bath
<b>PARADISE LOST</b>	Libby	Aoife Smyth	Drama Centre
<b>THE CHERRY ORCHARD</b>	Anya	Tim Robins	Drama Centre
<b>ROSE BERND</b>	Marthel	Jonathan Martin	Drama Centre
<b>PYGMALION</b>	Eliza	Brigid Zengeni	Drama Centre
<b>AS YOU LIKE IT</b>	Celia	Fiona Laird	NYT REP Company
<b>BLACK AND WHITE</b>	Tash	Paul Roseby	NYT REP Company
<b>RELISH</b>	Emma Soyer	Paul Roseby	National Youth Theatre

## Film

<b>Production</b>	<b>Character</b>	<b>Director</b>	<b>Company</b>
<b>CERES (Short)</b>	Proserpina	Amelia Sears	Kusini Productions
<b>NELL AND PAULINE (Short)</b>	Pauline Botty	Zoé Ford Burnett	Thirty Three Pictures
<b>MAGPIE</b>	Lily	Carmel Hannant	Paul Cook Film

<b>Production</b>	<b>Character</b>	<b>Director</b>	<b>Company</b>
<b>NO MORE KINGS (Short)</b>	Sigrid	Roger Nsengiyumva	
<b>ARCADE (Short)</b>	Pandora	Nida Manzoor	BM Producitons/BFI