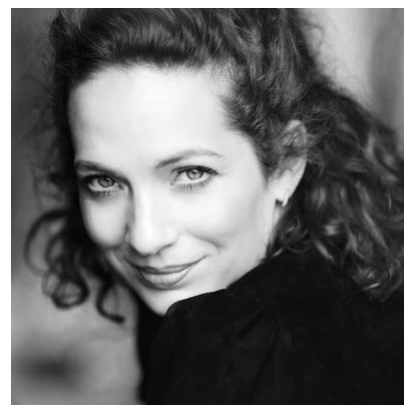


## Katherine Parkinson



### Agents

---

Lindy King

Associate Agent  
Tessa Schiller  
tschiller@unitedagents.co.uk  
020 3214 0800

Assistant  
Katie Rae  
krae@unitedagents.co.uk  
020 3214 0800

John Hyslop

jhyslop@unitedagents.co.uk

Assistant  
Eve Humphreys  
EHumphreys@unitedagents.co.uk

### Roles

---

#### Television

Production	Character	Director	Company
<b>RIVALS</b>	LIZZIE	ELLIOT HEGARTY	DISNEY+
<b>HERE WE GO (Series 2)</b>	Rachel Jessop	Various	BBC
<b>SIGNIFICANT OTHER (Series 1)</b>	Anna	Various	ITV, Quay Street Productions
<b>SPREADSHEET</b>	LAUREN	VARIOUS	NORTHERN PICTURES
<b>HITMEN</b>	KAT GASKILL	VARIOUS	ENDEMOL SHINE
<b>PANDEMONIUM</b>	RACHEL JESSOP	ELLA JONES	BBC STUDIOS

<b>Production</b>	<b>Character</b>	<b>Director</b>	<b>Company</b>
<b>UNPRECEDENTED: REAL TIME THEATRE FROM A STATE OF ISOLATION</b>	LIZ	VARIOUS	CENTURY FILMS
<b>DEFENDING THE GUILTY S1/S2</b>	CAROLINE	TOM GEORGE/JIM FIELD SMITH	BIG TALK/BBC 2
<b>HUMANS S1-3</b>	LAURA HAWKINS	CHINA MOO-YOUNG	CHANNEL 4
<b>HANG UPS</b>	KAREN MULLER	ROBERT DELAMERE	CHANNEL 4
<b>URBAN MYTHS (Series 1)</b>	Ange	Various	SKY
<b>THE KENNEDYS</b>	BRENDA KENNEDY	CHRISTINE GERNON	BBC
<b>LOVE MATTERS (Series 1)</b>	Jo Pepper	Various	Sky Living
<b>THE HONOURABLE WOMAN</b>	RACHEL STEIN	VARIOUS	BBC WORLDWIDE/DRAMA REPUBLIC
<b>INSIDE NO. 9</b>	REBECCA	DAVID KERR	BBC
<b>IN THE CLUB</b>	KIM	KAY MELLOR	ROLLEM PRODUCTIONS LTD
<b>THE IT CROWD</b>	JEN BARBER	GRAHAM LINEHAN	TALKBACK/C4
<b>OFFICIALLY SPECIAL</b>	JO PEPPER	CHRIS COTTAM	SKY 1
<b>THE BLEAK OLD SHOP OF STUFF</b>	CONCEPTIVA	BEN GOSLING FULLER	BBC
<b>SHERLOCK</b>	KITTY RILEY	TOBY HAYNES	HARTSWOOD
<b>HERE WE GO (Series 1)</b>	Rachel Jessop	Various	BBC
<b>COMA GIRL</b>	PIP	SIMON DELANEY	HARTSWOOD
<b>PSYCHOVILLE</b>	FIONA	MATT LIPSEY	BBC
<b>WHITES</b>	CAROLINE	DAVID KERR	BBC
<b>THE GREAT OUTDOORS</b>	SOPHIE	CATHERINE MORSHEAD	BBC
<b>THE OLD GUYS</b>	AMBER	DEWI HUMPHRIES	BBC
<b>JONATHAN CREEK XMAS SPECIAL</b>	NICOLA	DAVID RENWICK	BBC
<b>CHRISTMAS AT THE RIVIERA</b>	VANESSA	MARK BUSSELL	CARNIVAL FILM
<b>DOC MARTIN S2/S3/S4/CHRISTMAS SPECIAL</b>	PAULINE LAMB	BEN BOLT	BUFFALO/ITV
<b>FEAR STRESS AND ANGER</b>	GEMMA	MARTIN DENNIS	HARTSWOOD FILMS

<b>Production</b>	<b>Character</b>	<b>Director</b>	<b>Company</b>
<b>CASUALTY</b>	HELEN GIBBONS	CHRIS KING	BBC
<b>DIRTY FILTHY LOVE</b>	SONIA	ADRIAN SHERGOLD	GRANADA
<b>AHEAD OF THE CLASS</b>	VICKY FOLEY	ADRIAN SHERGOLD	GRANADA

## Film

<b>Production</b>	<b>Character</b>	<b>Director</b>	<b>Company</b>
<b>RADIOACTIVE</b>	JEANNE LANGEVIN	MARJANE SATRAPI	AMAZON STUDIOS
<b>THE NAN MOVIE</b>	NELL	JOSIE ROURKE	WARNER BROS
<b>PAUL DOOD'S DEADLY LUNCHBREAK</b>	CLEMMIE	NICK GELLESPIE	BELSTONE PICTURES
<b>HOW TO FAKE A WAR</b>	KATE	RUDOLPH HERZOG	20 STEPS/FRONT ROW
<b>THE GUERNSEY LITERARY AND POTATO PEEL PIE SOCIETY</b>	ISOLA PRIBBY	MIKE NEWELL	BLUEPRINT PICTURES
<b>THE BOAT THAT ROCKED</b>	FELICITY	RICHARD CURTIS	UNIVERSAL
<b>EASY VIRTUE</b>	MARION WHITTAKER	STEPHEN ELLIOTT	EALING STUDIOS

## Stage

<b>Production</b>	<b>Character</b>	<b>Director</b>	<b>Company</b>
<b>MUCH ADO ABOUT NOTHING</b>	BEATRICE	SIMON GODWIN	NATIONAL THEATRE
<b>UNCLE VANYA</b>	SONYA	RUPERT EVERETT	THEATRE ROYAL BATH
<b>HOME I'M DARLING (WEST END)</b>	JUDY	TAMARA HARVEY	DUKE OF YORK'S THEATRE
<b>HOME I'M DARLING</b>	JUDY	TAMARA HARVEY	NATIONAL THEATRE
<b>DEAD FUNNY</b>	ELEANOR	TERRY JOHNSON	VAUDEVILLE THEATRE
<b>BEFORE THE PARTY</b>	LAURA	MATTHEW DUNSTER	ALMEIDA
<b>ABSENT FRIENDS</b>	DIANA	JEREMY HERRIN	HAROLD PINTER THEATRE
<b>66 BOOKS</b>	JO	CHARLOTTE WESTERNA	BUSH THEATRE
<b>SCHOOL FOR SCANDAL</b>	LADY TEAZLE	DEBORAH WARNER	BARBICAN THEATRE

<b>Production</b>	<b>Character</b>	<b>Director</b>	<b>Company</b>
<b>SEASON'S GREETING</b>	PATTIE	MARIANNE ELLIOT	NATIONAL THEATRE
<b>COCK</b>	W	JAMES MACDONALD	ROYAL COURT
<b>THE SEAGULL</b>	MASHA	IAN RICKSON	ROYAL COURT
<b>THE LIGHTNING PLAY</b>	IMOGEN	ANNA MACKMIN	ALMEIDA
<b>OTHER HANDS</b>	LYDIA	BIJAN SHEIBANI	SOHO THEATRE
<b>FLUSH</b>	LILY	BIJAN SHEIBANI	SOHO THEATRE
<b>CIGARETTES AND CHOCOLATE</b>	GAIL	TOM EDMUNDS	KINGS HEAD THEATRE
<b>THE UNTHINKABLE</b>	FRAN	JOSIE ROURKE	SHEFFIELD CRUCIBLE
<b>ANTIGONE</b>	ANTIGONE	ALAN COX	THE GATE
<b>THE INCREASED DIFFICULTY OF CONCENTRATION</b>	ANNA BALCAR	SIMON GODWIN	THE GATE
<b>CAMILLE</b>	OLYMPE	DAVID MCVICAR	LYRIC HAMMERSMITH
<b>DEEP THROAT LIVE ON STAGE</b>	LINDA LOVELACE	ED DICK	FAT BLOKE PRODUCTIONS
<b>FRAME 312</b>	MAGGIE/ DORIS/ MARIE	JOSIE ROURKE	DONMAR WAREHOUSE
<b>THE AGE OF CONSENT</b>	STEPHANIE	ED DICK	THE BUSH