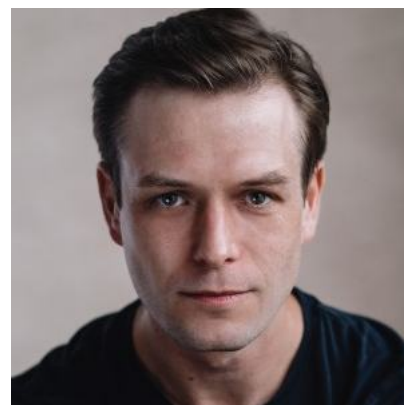


Sandy Batchelor

Actor



Agents

Ruth Young

ruthyoungteam@unitedagents.co.uk

Associate Agent

Alex Campbell

acampbell@unitedagents.co.uk

+44 (0)20 3214 0800

Assistant

Camille Allan

CAllan@unitedagents.co.uk

+44 (0)20 3214 0800

Assistant

Tom Ogg

togg@unitedagents.co.uk

+44 (0)20 3214 0800

Roles

Film

| Production | Character | Director | Company |
|---|----------------|-------------|--------------------------------|
| DECRYPTED | Arnold | Tom Sands | Substantial Films |
| FALSE WITNESS | Franklin | Tom Sands | Substantial Films |
| THREE ACTS | Rupert Lindsay | Tom Sands | Substantial Films |
| THE RISE AND FALL OF THE KRAYS | Barrie | Paul Tanter | Saracen Films |
| HENRY: PORTRAIT OF A SERIAL KILLER | Greg | Ed Viney | Bristol Old Vic Theatre School |
| THE SAD CASE | 1940s Man | Sam Rogers | Deep End Media |

Television

| Production | Character | Director | Company |
|-----------------------------|------------------|-------------------|-----------------------------|
| ROGUE HEROES S2 | Cram | Various | BBC |
| THE CAPTURE SERIES 2 | Jay | Various | BBC |
| SHETLAND SERIES 6 | Struan Guthrie | Various | BBC |
| ORDEAL BY INNOCENCE | Simon Neville | Sandra Goldbacher | Agatha Christie Productions |
| DOCTORS SERIES 18 | Kyle Arnold | Gary Williams | BBC |
| MAGIC GRANDAD | Private McGregor | Anne Ross Muir | Glasshead |
| HITLER SPEAKS | American G I | David Howard | Monster Films Ltd |

Stage

| Production | Character | Director | Company |
|---|------------------------|------------------|---------------------------------|
| RED ELLEN | Otto | Wils Wilson | Royal Lyceum Theatre Edinburgh |
| BILL MCLAREN: THE VOICE OF RUGBY | Gregor/Young Bill | Richard Baron | Firebrand Theatre |
| LEAVE TO REMAIN | Raymond | Robby Graham | Lyric Hammersmith |
| STRANGERS ON A TRAIN UK TOUR | Frank Myers | Anthony Banks | ATG |
| HIGH SOCIETY | Mike | Joseph Pitcher | The Mill At Sonning Theatre LTD |
| COMEDY: A TRAGEDY IN ONE ACT | Young Man | Stephen Oswald | The Canting Crew |
| NUTCRACKER | Elias/Nutcracker | Blanche McIntyre | Nuffield Theatre |
| THE CAPTAIN OF KOPENICK | Sergeant Conrad | Adrian Noble | National Theatre |
| THE REAL THING | Brodie | Kate Saxon | ETT / West Yorkshire Playhouse |
| THE TEMPEST | Boatswain | Adrian Noble | Bath Theatre Royal |
| DR. ANGELUS | Dr. Johnson | Ken Alexander | Pitlochry Festival Theatre |
| PRIVATES ON PARADE | Private Steven Flowers | Richard Baron | Pitlochry Festival Theatre |
| TRELAWNY OF THE WELLS | Arthur Gower | John Durnin | Pitlochry Festival Theatre |

| Production | Character | Director | Company |
|---|-------------------------|------------------------------|--------------------------------|
| JACK AND THE BEANSTALK | Jack | Andrew Panton | Perth Theatre |
| MY FAIR LADY | Freddy Eynsford-Hill | John Durnin | Pitlochry Festival Theatre |
| WHISKY GALORE! A MUSICAL | Sergeant Odd / Drum Kit | Ken Alexander | Pitlochry Festival Theatre |
| AN IDEAL HUSBAND | Vicomte de Nanjac | Richard Baron | Pitlochry Festival Theatre |
| BUS STOP | Bo Decker | Ken Alexander | Pitlochry Festival Theatre |
| CINDERELLA | Prince Charlemagne | John Durnin | Pitlochry Festival Theatre |
| KISS ME KATE | Bill Calhoun | John Durnin | Pitlochry Festival Theatre |
| THE LIFE OF STUFF | Alec Sneddon | John Durnin | Pitlochry Festival Theatre |
| THE SERVANT OF TWA MAISTERS | Sandy MacKenzie | Richard Baron | Pitlochry Festival Theatre |
| WHAT EVERY WOMAN KNOWS | Thomas | John Durnin | Pitlochry Festival Theatre |
| WHISKY GALORE! A MUSICAL | Sergeant Odd / Musician | Ken Alexander | Pitlochry Festival Theatre |
| THE WIZARD OF OZ | Scarecrow | Guy Hollands / Andrew Panton | The Citizens Theatre |
| THOMAS AND FRIENDS LIVE! ASIA TOUR | Thomas Driver | Jamie Hollmer | AEG ThemeSTAR |
| THOMAS AND FRIENDS LIVE! UK TOUR | Thomas Driver | Jamie Hollmer | AEG ThemeSTAR |
| A MIDSUMMER NIGHTS DREAM | Lysander | Chris Denys | Bristol Old Vic Theatre School |

Radio

| Production | Character | Director | Company |
|-------------------------|------------------|-----------------|-----------------|
| HAMISH HENDERSON | Hamish Henderson | Mike Hally | Squaredog Radio |
| THE MENIN GATE | | Mike Hally | Squaredog Radio |
| SILVER BULLET | Watty | Ruth Chalmers | BBC Radio |

Other

| Production | Character | Director | Company |
|-----------------------------|--------------------|---|----------------|
| ACCENTS AND DIALECTS | * = Native | American - New York, American - Standard, Edinburgh, Fife, Glasgow, Hebrides, RP, Scottish Standard*, Scottish West Coast, West | |
| LANGUAGES | * = Mother Tongue | English*, French | |
| MUSIC AND DANCE | * = Highly Skilled | Ballad, Ballet, Baritone*, Contemporary Dance, Drums*, Harmonica, Jazz Dancing, Jazz/Rock Singing, Percussion, Piano, Recorder | |
| PERFORMANCE | | Musician-Professional | |
| SPORTS | * = Highly Skilled | Badminton*, Climbing*, Football, Pool, Running, Stage Combat* | |
| VEHICLE LICENCES | | Car Driving Licence | |
| OTHER SKILLS | | Fire Poi, Improvisation, Juggling | |