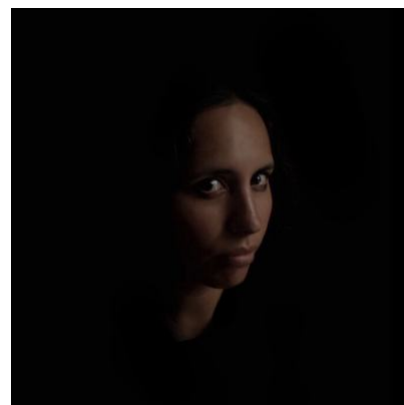


## Sophia Al-Maria

### Writer-Director

Sophia Al Maria is an artist, writer, and filmmaker. She grew up between the United States and Qatar before moving to Egypt to study comparative literature at the American University in Cairo. She next completed a graduate degree in aural and visual cultures at Goldsmiths, London.



## Agents

Natasha Galloway      Assistant  
Hassan Sherif Abdelfattah-Elmakhzangui  
hsherif@unitedagents.co.uk  
0203 214 0866

## Credits

### Short Films

Production	Company	Notes
<b>NOT MY BAG</b> 2023	Seattle Office of Arts & Culture	Video installation at the Henry Art Gallery, Seattle
<b>TIGER STRIKE RED</b> 2022		Video installation at the 59th International Art Exhibition at La Biennale di Venezia, Venice
<b>TENDER POINT RUIN</b> 2021	Luma Foundation	Single Channel HD Video as part of installation at LUMA Westbau, Zurich.
<b>ASTRAL BODIES ELECTRIC, MAKEUP!</b> 2019	Project Native Informant	Co-created with Sin Wai Kin. Installation at Transformer: A Rebirth of Wonder, 180 The Strand.
<b>BEAST TYPE SONG</b> 2019	Anna Lena Films / Project Native Informant	Video installation at Tate Britain
<b>MOTHERSHIP</b> 2017	Channel 4	Commissioned for Channel 4 Random Acts through the Jarman Award

Production	Company	Notes
<b>THE FUTURE WAS DESERT PART</b> 2016	Project Native Informant	
<b>A WHALE IS A WHALE IS A WHALE</b> 2014	Creative Time Reports	

## Film

Production	Company	Notes
<b>SISTERS WITH TRANSISTORS</b> 2020	Willow Glen Films // Anna Lena Films	As writer of voice over.

## Television

Production	Company	Notes
<b>LITTLE BIRDS</b> 2016	Warp	As Writer. TV adaptation starring Juno Temple.

## In Development

Production	Company	Notes
<b>DUNSINANE</b> 2024	World Productions	As Writer. Television Pilot.