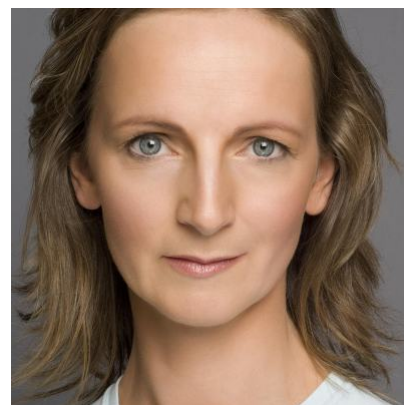


Norma Sheahan

RADA, 3 year acting diploma & stage fighting certificate.



Agents

Kirk Whelan-Foran

kwfoffice@unitedagents.co.uk

+44 (0) 20 3214 0800

+44 (0)7920713142

Assistant

Donovan Mathews

dmathews@unitedagents.co.uk

02032140800

Second Assistant

Ben Powney

bpowney@unitedagents.co.uk

Roles

Film

| Production | Character | Director | Company |
|---------------------------------|---------------------|------------------------|---------------------------|
| Who We Love | Diane | Graham Cantwell | Treehouse Media |
| POSTER BOYS | Minnie | Dave Minogue | Promenade Post Production |
| LOVE, ROSIE | Immigration Officer | Christian Ditter | RD Film Productions Ltd |
| STANDBY | Airline Woman | Rob Burke/ Ronan Burke | Overnight Films |
| THE CONSOLATION OF ORION | Susan | Siobhán McMahon | El Zorrero Films |
| AN CRISIS EILE | Emer | Charlie McCarthy | Wildfire Films/TG4 |
| MILO | Garda | Berend & Roel Boorsma | Samson Films |
| SAVAGE | Paul's Nurse | Brendan Muldowney | SP Films |
| ONDINE | Librarian | Neil Jordan | Octagon Films/RTÉ |
| NEW BOY (Short) | School Teacher | Steph Green | RTE Short Cuts/ Zanzibar |

| Production | Character | Director | Company |
|------------------------------|------------------|-----------------|---|
| STRENGTH & HONOR | Shannon Kelleher | Mark Mahon | Maron Pictures |
| BOTCHED | Helena | Kit Ryan | Opix Pictures |
| THE FORMORIAN (Short) | Formorian | Aideen Murphy | Warrior Films |
| THE WIDOW (Short) | The Widow | Steve Murphy | Warrior Films |
| INTERMISSION | Sarah | John Crowley | Brown Sauce Films |
| NOBODY HOME | Sue | Eman Little | Little Vision |
| A DATE FOR MAD MARY | Sally | Darren Thornton | |
| HANDSOME DEVIL | Lindy Masters | John Butler | Treasure Entertainment Windmill Lane |

Radio

| Production | Character | Director | Company |
|--------------------------------------|--------------|------------------|----------------|
| FREGAL MCELHERRON | Prodigal | | RTE |
| BROKEN MOON | Ensemble | Rachel West | RTE |
| THE CIDER QUEENS | Benie Murphy | Aidan Matthews | RTE |
| SHROOMS | ADR | Paddy Breathnach | Treasure Films |
| SWAN'S CROSS | Theresa | Daniel Reardon | RTE |
| SWAN-SONG FOR THE NIGHTINGALE | Theresa | Ned Chaillet | BBC, London |
| BEDBOUND | Daughter | Enda Walsh | RTE |
| LITTLE MISS P | Miss P | Enda Walsh | BBC |
| THIS OLD MAN | Sis | Anna Walsh | RTE |

Stage

| Production | Character | Director | Company |
|-----------------------------|---------------|-----------------|-----------------------|
| THE CONSTANT WIFE | Martha Culver | Alan Stanford | Gate Theatre |
| VAGINA MONOLOGUE | Woman 1 | Michael Scott | National Tour |
| HOMELAND | Katerina | Paul Mercier | Abbey Theatre |
| THE TINKER'S WEDDING | Sarah Casey | Garry Haynes | Druid Synge |
| THE WELL OF SAINTS | Brid | Garry Haynes | Druid Synge |
| THE PROPOSAL | Sarah | Conall Morrison | Peacock Theatre |
| AFTER DARWIN | Millie | Jackie Doyle | Prime Cut Productions |
| BEDBOUND | Daughter | Enda Walsh | Royal Court |
| BEDBOUND | Daughter | Enda Walsh | Traverse, Edinburgh |

| Production | Character | Director | Company |
|-------------------------------|------------------|--------------------------------|----------------------------|
| BEDBOUND | Daughter | Enda Walsh | Andrews Lane, Dublin |
| BIG MAGGIE | Gert | Garry Hynes | Abbey Theatre, Dublin |
| TEN | Norma | Eugene O'Brien/ Karl Shiels | Project Arts Centre |
| CAR SHOW | Adi | Eugene O'Brien/ Charlie Bonner | Car Show |
| PHILISTINES | Yelena | Ewan Smith | Bloomsbury Theatre, London |
| BIRDS ON THE WING | Hilda Cartwright | Guy Slater | Westminster Theatre |
| TROILUS & CRESSIDA | Troilus | Robin Midgley | G.B. Shaw Theatre/ RADA |
| DANCING AT LUGHNASA | Kate Mundy | Caroline Eves | Studio Kennington |
| THARK | Lady Bendow | Ellis Jones | G. B. Shaw Theatre |
| DUCHESS OF MALFI | Duchess of Malfi | Brigid Panet | RADA |
| WASTELAND | Chorus | William Gaskill | RADA |
| ALL MY SONS | Anne | Jennie Buckman | RADA |
| LETTERS HOME | Aurelia | Audrey Devereaux | Bewleys Theatre |
| SPEED THE POW | Karen | Niamh Murphy | UCD Theatre |
| RED RIDING HOOD | Red Riding Hood | John Twomey | Cork Opera House |

Television

| Production | Character | Director | Company |
|------------------------------|------------------------|------------------|-------------------------|
| THE DRY | Mrs. McDonnell | Paddy Breathnach | Element Pictures |
| HARRY WILD | Jessica Armstrong | Rob Burke | Acorn TV |
| HOLDING | D.S. Norma Casey | Kathy Burke | ITV Studios |
| THREE FAMILIES | Midwife | Alex Kalymnios | BBC |
| BLAST FROM THE PAST | Rory O'Connor's Mother | Hugh Farley | Firebrand Productions |
| DEAD STILL | Lucinda Breslin | Various | Acorn TV |
| WOMEN ON THE VERGE | | | Merman for UKTV |
| BRIDGET & EAMON | Noreen | Various | Pure Class Productions |
| DAMO & IVOR | Victoria Itchidaddy | Robert Quinn | Identical Films Limited |
| SCUP | Barbara | Declan Recks | Stirling Productions |
| FOYLE'S WAR: THE CAGE | Nurse | Stuart Orme | ITV |
| RIPPER STREET | Distressed Woman | Andy Wilson | BBC/Tiger Aspect |
| REBELLION | Sister Patrick | Aku Louhimies | Sundance Channel |

| Production | Character | Director | Company |
|---|-------------------|------------------|------------------------------|
| MOONE BOY (Series 1, 2 & 3) | Linda | Declan Lowney | Baby Cow/Sky TV |
| PRIMEVAL | Margaret | Robert Quinn | Impossible Pictures/ITV |
| AN CRISIS | Emer | Charlie McCarthy | Wildfire Films/TG4 |
| SCHOOL RUN | Veronica Sullivan | Neasa Hardiman | Grand Pictures |
| PADDYWHACKERY | Felicity | Daniel O'Hara | Maxicorp Productions Ltd |
| BE MORE ETHNIC | Shopkeepers Wife | Ian Fitzgibbon | BBC |
| IT HAPPENED ONE NIGHT | Eileen | Jonathan Shaw | Independent |
| THE CLINIC (Series 1, 2 & 3) | Fiona McColgan | Various | Parallel Films/ RTE |
| LOVE IS THE DRUG | Sarah | Darren Thornton | West Street TV Productions |
| CITIZEN CHARLIE | TD | Kenneth Glenaar | Chieftan Film Production LTD |
| CAN'T COPE, WON'T COPE | Mum | | Deadpan Pictures |