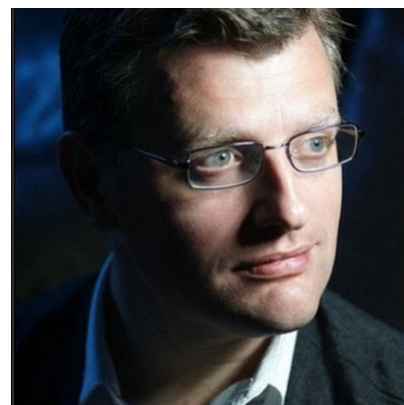


Estate of Lee Blakeley

Theatre Director

Lee Blakeley studied at the Royal Scottish Academy of Music and Drama and Glasgow University, graduating with the prize for directing. Working extensively in opera and musicals his productions, noted for their visual flair and theatricality, have been seen in theatres and opera houses around the world. Lee sadly passed away in 2017. Please contact Mildred Yuan myuan@unitedagents.co.uk



Credits

Theatre

Production	Company	Notes
KISS ME KATE - PORTER 2016	Grand Theatre du Luxembourg, Luxembourg	
THE KING AND I - RODGERS AND HAMMERSTEIN 2016	Lyric Opera Chicago IL, USA	
SWEENEY TODD - SONDHEIM 2016	San Francisco Opera, CA, USA	
KISS ME KATE - PORTER 2015 - 2016	Theatre du Chatelet, Paris France	
SWEENEY TODD - SONDHEIM 2015	Houston Grand Opera, TX, USA	
INTO THE WOODS - SONDHEIM 2014	Theatre du Chatelet, Paris, France	
KING AND I - RODGERS AND HAMMERSTEIN 2014	Theatre du Chatelet, Paris France	
SUNDAY IN THE PARK WITH GEORGE 2013	Theatre du Chatelet, Paris, France	

Opera

Production	Company	Notes
MACBETH - VERDI 2016	Opera Theatre St Louis, MS USA	
MADAM BUTTERFLY - PUCCINI 2016	Los Angeles Opera, CA USA	
RIGOLETTO - VERDI 2015	Santa Fe Opera, NM USA	
RICCARDO PRIMO - HANDEL - AMERICAN PREMIERE 2015	Opera Theatre, St Louis, MI USA	
IL TURCO IN ITALIA 2014	Grand Theatre Du Luxembourg, Luxembourg	
THE GRAND DUCHESS OF GEROLSTEIN - OFFENBACH 2013	Santa Fe Opera, NM USA	
PAT KIRKWOOD IS ANGRY 2013	Royal exchange, 54 @ 54, UK/USA	
FALSTAFF - VERDI 2013	Los Angeles Opera, CA USA	
IL TURCO IN ITALIA - ROSSINI 2013	Opera Angers Nantes, France	
COSI FAN TUTTE - MOZART 2012	Royal College of Music, London	

Additional information

Website: <http://www.leeblakeley.com>

Showreel: <https://vimeo.com/192842184>