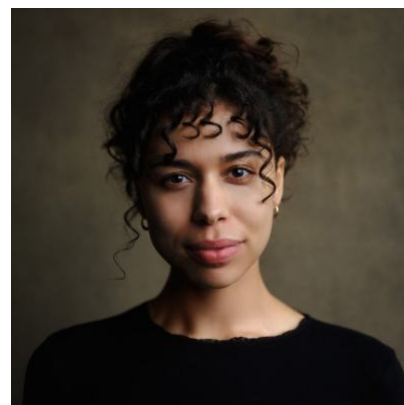


## Georgia-Mae Myers



### Agents

---

Kirk Whelan-Foran

kwfoffice@unitedagents.co.uk

+44 (0) 20 3214 0800

+44 (0)7920713142

Assistant

Donovan Mathews

dmathews@unitedagents.co.uk

02032140800

Second Assistant

Ben Powney

bpowney@unitedagents.co.uk

### Roles

---

#### Rehearsed Reading

Production	Character	Director	Company
<b>FUNCTION</b>	Ava	Lynette Linton	Duke of York Theatre

#### Short Film

Production	Character	Director	Company
<b>BREATH OF ANOTHER</b>	Dutch	Sheridan Seraphin	Blue Sera Films
<b>RUTH</b>	Maya	Sonia Martí Gallego	The New Flesh

#### Stage

Production	Character	Director	Company
<b>ALL'S WELL THAT ENDS WELL</b>	Diana	Chelsea Walker	Shakespeare's Globe

<b>Production</b>	<b>Character</b>	<b>Director</b>	<b>Company</b>
<b>FRANKENSTEIN UK TOUR</b>	The Creature	Andrew Quick and Simon Wainwright	Leeds Playhouse & ITD
<b>DISMISSED</b>	Ashley	Nikhil Vyas	Soho Theatre
<b>TITUS ANDRONICUS</b>	Lavinia	Jude Christian	Shakespeare's Globe
<b>WARS OF THE ROSES</b>	Duchess of York/ French Messenger (Movement Captain)	Owen Horsely	RSC
<b>HENRY VI: REBILLION</b>	Margaret Jourdain (Movement Captain)	Owen Horsely	RSC
<b>THERE MAY BE A CASTLE</b>	Violet	Samantha Lane	Little Angel Theatre
<b>MADRIGAL</b>	Stewart	Jaz Woodcock-Stewart	Royal Central School of Speech and Drama
<b>THE WITCH OF EDMONTON</b>	Susan Carter	Robbie Bowman	The Royal Central School of Speech and Drama
<b>THE GOVERNMENT INSPECTOR</b>	Anna Andreyevna	Sinead Rushe	The Royal Central School of Speech and Drama
<b>A STREETCAR NAMED DESIRE</b>	Blanche DuBois	Hannah Banister	The Royal Central School of Speech and Drama
<b>HEDDA GABLER</b>	Thea Elvsted	Yael Shavit	The Royal Central School of Speech and Drama
<b>FUNCTION</b>	Ava	Lynette Linton	NYT