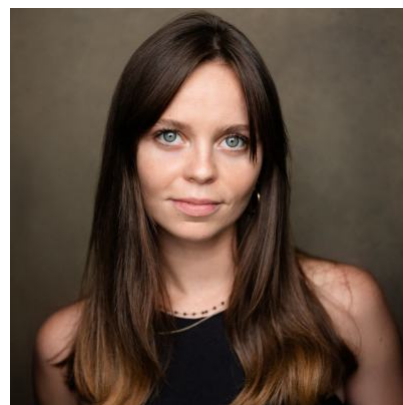


## Eva Bradley-Williams

Actor



### Agents

Ellie Blackford

eblackford@unitedagents.co.uk

### Roles

#### Film

Production	Character	Director	Company
<b>WATERBIRTH</b>	Florence	Fozia Khaliq	Public Display of Affection Films
<b>ECHOES</b>	Sadie	Harley Cameron-Furze	AP Independent
<b>THIS IS THE NIGHT MAIL</b>	Aimee Ryder	Joanne Reay	Unquiet Skulls
<b>MASKS</b>	Imogen	Isabella Culver	
<b>FAIRGROUND</b>	Sam	Amar Chadha-Patel	Orillo Films
<b>THE GOSSIP</b>	Meesha	Rolfin Nyhus	F-5 Films
<b>THE WORKS</b>	Celia	Elliot Barnes-Worrell	Shakespeare Lives
<b>HOMELESS</b>	Sarah	Jeongming Lee	NFTS
<b>BROKEN</b>	Skunk	Justin Edgar	
<b>IN CONTROL</b>	Jaz	Jeremy James	The Tramshed

#### Television

Production	Character	Director	Company
<b>FOUNDATION S2</b>	Varia	Josh Friedman/David S. Goyer	Apple TV+

## Stage

<b>Production</b>	<b>Character</b>	<b>Director</b>	<b>Company</b>
<b>ROMEO &amp; JULIET</b>	Juliet	Martha Geelan	Young Shakespeare Company
<b>NUDE</b>	Alex	Harley Cameron-Furze	Home Studios
<b>FACTION</b>	Paris Noble	Darren Cheek	Damn Cheek
<b>JUMP OUT OF SKIN</b>	Kika	Tony Casement	The Pleasance Theatre (London)
<b>DRACULA</b>	Ensemble	Joe Harmston	International Tour/Ewing Entertainment Worldwide
<b>EVERYDAY HORSE</b>	Billie	Saul Reid	Theatre 503
<b>INHABITABLE</b>	Carol	Zoe Cobb	Artful Badger/Camden Peoples Theatre
<b>PILLOW TALK</b>	Cassie	Zoe Cobb	The Vaults
<b>VALHALLA</b>	Daughter	Jo McInnes	Theatre 503

## Short Film

<b>Production</b>	<b>Character</b>	<b>Director</b>	<b>Company</b>
<b>DREAM CAR WASH</b>		Edoardo Brighenti	Tinge Krishnan / Disruptive Element Films Ltd