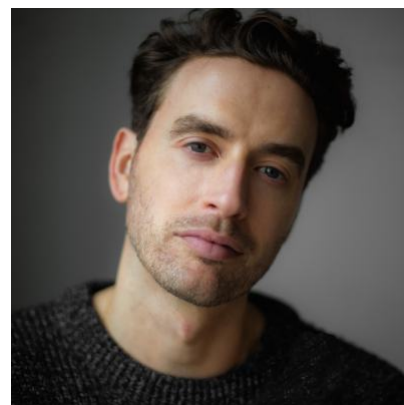


## Timothy Renouf



### Agents

---

Gabriella Capisani

GCapisani@unitedagents.co.uk

### Roles

---

#### Film

Production	Character	Director	Company
<b>NEAR MISS</b>	Dave	Jamie Rafn	
<b>THE LAUREATE</b>	Siegfried Sassoon	William Nunez	Bohemia Media
<b>AFTERLIFE OF THE PARTY</b>	Max	Stephen Herek	Netflix
<b>HERE COMES HELL</b>	Freddie	Jack McHenry	Trashouse Films
<b>KILLER WEEKEND</b>	Myles	Ben Kent	Game Over Film
<b>GOLDBRICKS IN BLOOM</b>	Charlie Twaites	Danny Sangra	Control Films & Constance Fry Pictures
<b>SET THE THAMES ON FIRE</b>	Jimmy Dean	Ben Charles Edwards	Blonde to Black
<b>FULL FIREARMS</b>	Nativity King	Emily Wardill	Film London

#### Television

Production	Character	Director	Company
<b>BERGERAC</b>	Julien Wakefield	Colm McCarthy	UKTV
<b>A VERY BRITISH SCANDAL</b>	Peter Combe	Anne Sewitsky	BBC 1 / AMAZON STUDIOS

<b>Production</b>	<b>Character</b>	<b>Director</b>	<b>Company</b>
<b>SHAKESPEARE &amp; HATHAWAY: PRIVATE INVESTIGATORS</b>	Rufus Hortensio	Paul Gibson	BBC
<b>12 KILLERS</b>	Beau	Andy Mosse	Wildseed Studios
<b>ON THE EDGE</b>	Jonny	Dionne Edwards	Blacklight Television
<b>GENIUS</b>	Andre Beaudin	Kenneth Biller	National Geographic
<b>PIXIES</b>	William	Tom Marshall	Big Talk Productions
<b>GUILT</b>	Chris	Gary Fleder	Lionsgate
<b>AGATHA RAISIN: THE QUICHE OF DEATH</b>	Danny Shine	Geoffrey Sax	Mammoth Films
<b>FRANKENSTEIN AND THE VAMPYRE: A DARK AND STORMY NIGHT</b>	Percy Shelley	Philip Smith	Oxford Scientific
<b>BBC BRINGING BOOKS TO LIFE</b>	Skulduggery Pleasant	Oliver Smyth	Somethin' Else

## Stage

<b>Production</b>	<b>Character</b>	<b>Director</b>	<b>Company</b>
<b>COMING HOME</b>	James	Rad Popp	Southwark Playhouse
<b>HOT MESS</b>	Polo	Julian Bruton	Vernal Theatre Company

## Short Film

<b>Production</b>	<b>Character</b>	<b>Director</b>	<b>Company</b>
<b>WAR</b>	Lieutenant James Cornflake	Danny Sangra	B-REEL
<b>ROOM SERVICE</b>	Joe Twaites	Danny Sangra	B-REEL Films
<b>STRANGE BEASTS</b>	Victor	Magali Barbe	Peanut
<b>BREAKING</b>	Henry	Saul & Josh	Agile Films
<b>WILL NATURE MAKE A MAN OF ME YET</b>	Tommy	Ben Charles Edwards	Iconoclast
<b>CRYSTALS AND THE POSTMAN ARE A GIRLS BEST FRIEND</b>	The Postman	Ellen Von Unwerth	Alyn Productions Ltd
<b>A LUNCH BREAK ROMANCE</b>	The Guy	Danny Sangra	Academy Films
<b>I KNOW</b>	Cameo Joe	Danny Sangra	Academy Films
<b>NO F***** AROUND IN ROOM 427</b>	Joe	Danny Sangra	Academy Films
<b>SUSPEND BELIEF</b>	Coffee Shop Joe	Danny Sangra	Academy Films
<b>ON TO THE NEXT ONE</b>	Lead Male	Danny Sangra	Academy Films

<b>Production</b>	<b>Character</b>	<b>Director</b>	<b>Company</b>
<b>THE ARRANGEMENT</b>	Lead Male	Ed Duffield & Polly Brown	Wonderland Magazine
<b>THE THIRD DAY</b>	Lead Male	Danny Sangra	Academy films
<b>10AM MARGARITA</b>	Will	Danny Sangra	Academy Films