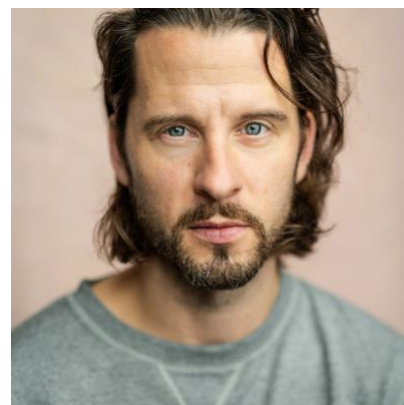


## Robert Lonsdale



### Agents

---

Cat Palethorpe

cpalethorpe@unitedagents.co.uk

Charlotte Davies

cdavies@unitedagents.co.uk

+44 (0)20 3214 0800

Associate Agent

Cat Palethorpe

cpalethorpe@unitedagents.co.uk

+44 (0) 20 3214 0800

### Roles

---

#### Television

Production	Character	Director	Company
<b>DALGLEISH</b>	Neil Pascoe	Roger Goldby	New Pictures/Channel 5
<b>PATIENCE</b>	Peter Venkman	Maarten Moerkerke	Eagle Eye Productions
<b>MARY AND GEORGE</b>	Felton	Oliver Hermanus / Florian Cossen / Alex Winckler	Hera Pictures
<b>KILLING EVE 4</b>	Donnie	Stella Corradi	Sid Gentle Films/BBC America
<b>CHIVALRY</b>	Rick	Marta Cunningham	Baby Cow
<b>PISTOL</b>	Chris Thomas	Danny Boyle	FX
<b>HOLBY CITY</b>	Clayton Pearson	Griff Rowland	BBC
<b>FINDING ALICE</b>	Ollie	Roger Goldby	ITV
<b>DEATH IN PARADISE</b>	Dave Hammond	Richard Signy	Red Planet Pictures for BBC
<b>ANNE</b>	Christian Spooner	Bruce Goodison	ITV

<b>Production</b>	<b>Character</b>	<b>Director</b>	<b>Company</b>
<b>GEORGE GENTLY</b>	Robert Platt	Robert Del Maestro	ITV
<b>VERA</b>	Joe Connell	Louise Hooper	ITV
<b>CHEWING GUM (SERIES TWO)</b>	Connor	Simon Neale	Retort/E4
<b>LOVESICK</b>	Steve	Elliot Hegarty	Netflix
<b>CHEWING GUM</b>	Connor	Tom Marshall	Retort/E4
<b>THE INTERCEPTOR</b>	Tommy	Farren Blackburn	BBC Grafton House
<b>SILENT WITNESS</b>	DC Gus Cook	Anthony Byrne	BBC Drama
<b>SILENT WITNESS</b>	Paul Kennedy	Anthony Byrne	BBC Drama
<b>DOCTORS</b>	Anthony Goff	Paul Gibson	BBC Drama
<b>PLUS ONE</b>	Toby's Chum	Sarah O'Gormon	Kudos
<b>HEARTBEAT</b>	Wayne	Andrew Morgan	Yorkshire Television
<b>BEN'S PATIENT</b>	Jake	Jo Shoop	Chameleon TV
<b>CORONATION STREET</b>	Dan Stavely	John Anderson	Granada

## Stage

<b>Production</b>	<b>Character</b>	<b>Director</b>	<b>Company</b>
<b>OUR NATIONAL HEALTH SERVICES</b>	Facilitator	Kwame Kwei-Armah	Young Vic
<b>STANDING AT THE SKY'S EDGE</b>	Harry	Robert Hastie	The National Theatre / Sheffield Theatres
<b>A LITTLE NIGHT MUSIC</b>	Henrik	Rob Ashford	Open Air, Tangiers
<b>AS YOU LIKE IT</b>	Oliver/Amiens	Robert Delaney	Lamb Players
<b>UTILITY</b>	Chris	Caitlin McLeod	Orange Tree Theatre
<b>ALL'S WELL THAT ENDS WELL</b>	Bertram	Robert Delaney	Lamb Players
<b>A LIE OF THE MIND</b>	Mike	James Hillier	Defibrillator Productions/Southwark Playhouse
<b>MUCH ADO ABOUT NOTHING</b>	Claudio	Jonathan Broadbent	Lamb Players
<b>PLAQUES &amp; TANGLES</b>	Jez	Lucy Morrison	Royal Court Theatre
<b>ANOTHER PLACE</b>	Daniel	Jo McInnes	Theatre Royal Plymouth
<b>FROM HERE TO ETERNITY</b>	Robert E. Lee Prewitt	Tamara Harvey	Tim Rice/Lee Menzies - Shaftesbury Theatre

<b>Production</b>	<b>Character</b>	<b>Director</b>	<b>Company</b>
<b>BRILLIANT ADVENTURES</b>	Luke	Caroline Steinbeis	Manchester Royal Exchange/Newcastle Live Theatre
<b>A LIFE</b>	Lar	Ellie Rhode	Finborough Theatre
<b>ANNA CHRISTIE</b>	Sailor/Ensemble	Rob Ashford	Donmar Warehouse
<b>LA BETE</b>	Rene Du Parc	Matthew Warchus	Sonia Friedman Productions
<b>THE INDIAN WANTS THE BRONX</b>	Murph	Daljinder Singh	The Young Vic
<b>THE MANDATE</b>	Autonom/Organ Grinder	Adrian Stokes	ALRA

## Radio

<b>Production</b>	<b>Character</b>	<b>Director</b>	<b>Company</b>
<b>LUD IN THE MIST</b>	Willy Wisp	Abigail Fleming	BBC Radio 4
<b>YOU &amp; ME</b>	Tom	Polly Thomas	BBC Radio 4
<b>SOUR HALL</b>	Thomas	Laura Kirwan-Ashman	Audible
<b>SLIPPING THROUGH TIME</b>	Josh	Tracey Beale	BBC Radio Drama
<b>ADAM ALONE</b>	Narrator		Audio book for Audible
<b>HOMEFRONT</b>	Frank	Lucy Collingwood	BBC Radio Drama
<b>THE TENANT OF WILDFELL HALL</b>	Gilbert	David Hunter	BBC Radio Drama
<b>SARGASSO</b>	Kevin	Marc Beeby	BBC Radio 4
<b>MOLE</b>	Mathew	Marc Beeby	BBC Radio 4
<b>THE STEPS</b>	Oliver	Claire Grove	BBC Radio 3
<b>ALL QUIET ON THE WESTERN FRONT</b>	Paul Baumer	David Hunter	BBC Radio 3
<b>PILGRIM</b>	Darren	Jessica Dromgoole	BBC Radio 4
<b>THE PATTERN OF PAINFUL ADVENTURES</b>	William Ostler	Jeremy Mortimer	BBC Radio 3

## Film

<b>Production</b>	<b>Character</b>	<b>Director</b>	<b>Company</b>
<b>LOST CHRISTMAS</b>	PC	John Hay	Impact Pictures
<b>A PASSIONATE WOMAN</b>	Graham	Antonia Bird/Kay Mellor	Rollem Productions
<b>PATIENCE</b>	Peter Venken		Eagle Eye Patience Ltd

<b>Production</b>	<b>Character</b>	<b>Director</b>	<b>Company</b>
<b>WALKING WITH THE ENEMY</b>	Gyula	Mark Schmidt	Liberty Studios Inc

## Workshop

<b>Production</b>	<b>Character</b>	<b>Director</b>	<b>Company</b>
<b>LITTLE BITS OF LIGHT</b>	Ray	Maria Crocker	National Theatre Studio
<b>SCUM</b>	Jack	Jaz Woodcock-Stewart	45 North
<b>SHE DEVIL!</b>	Garcia	Simon Phillips	RGM Productions
<b>LEAVE TO REMAIN</b>	Alex	Robby Graham	Lyric Hammersmith
<b>CARMEN</b>	Don Jose	Sir Nicholas Hytner	London Theatre Company
<b>FROM HERE TO ETERNITY</b>	Prewitt	Tamara Harvey	Tim Rice and Lee Menzies
<b>MADE IN DAGENHAM</b>	Barry/Ensemble	Rupert Goold	Stage Entertainment
<b>FINDING NEVERLAND</b>	Elliot	Rob Ashford	Weinstein Live Entertainment