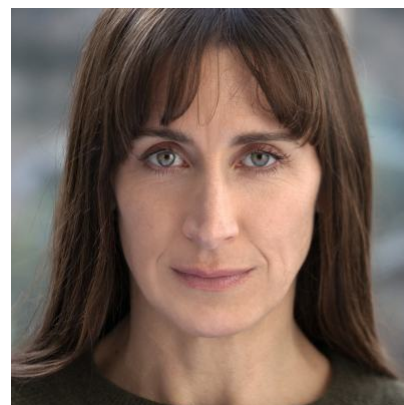


## Karina Fernandez

Actor



### Agents

---

Ruth Young

ruthyoungteam@unitedagents.co.uk

Associate Agent

Alex Campbell

acampbell@unitedagents.co.uk

+44 (0)20 3214 0800

Assistant

Camille Allan

CAllan@unitedagents.co.uk

+44 (0)20 3214 0800

Assistant

Tom Ogg

togg@unitedagents.co.uk

+44 (0)20 3214 0800

### Roles

---

#### Film

Production	Character	Director	Company
<b>COST OF LIVING</b>	Jayne Baghurst	Ryan Hogan	Rhyming Films
<b>MISS MARX</b>	Olive Shreiner	Susanna Nicchiarelli	Vivo Film
<b>NICO, 1988</b>	Laura	Susanna Nicchiarelli	Vivo Film
<b>SENSE OF AN ENDING</b>	Eleanor Marriott	Ritesh Batra	Sense Productions Limited
<b>PRIDE</b>	Stella	Matthew Warchus	Proud Films Productions Limited
<b>MR TURNER</b>	Miss Coggins	Mike Leigh	Thin Man Films
<b>NOW IS GOOD</b>	Nurse	Ol Parker	Blueprint Pictures

<b>Production</b>	<b>Character</b>	<b>Director</b>	<b>Company</b>
<b>ANOTHER YEAR</b>	Katie	Mike Leigh	Thin Man Films
<b>HAPPY GO LUCKY</b>	Flamenco Dance Teacher	Mike Leigh	Thin Man Films
<b>GABRIEL</b>	Maria	Garvan McGrath	
<b>THE RETURN</b>	Natasha	Despina Castelli	
<b>DAPHNE</b>	Beth	Peter Mackie Burns	Daphne Productions Ltd

## Television

<b>Production</b>	<b>Character</b>	<b>Director</b>	<b>Company</b>
<b>THE DEVIL'S HOUR S2</b>	Tracey	Johnny Allan	Amazon
<b>EXTRAORDINARY</b>	Gemma	Various	Sid Gentle Films/Hulu
<b>THE THIEF, HIS WIFE AND THE CANEO</b>	Nicola Finnerty	Richard Laxton	ITV
<b>KILLING EVE S3</b>	Sharon	Various	BBC
<b>TRYING</b>	Claudette	Jim O'Hanlon	BBC
<b>HOLBY CITY</b>	Casey McGee	Various	BBC
<b>QUICK CUTS</b>	Sophie	Natalie Bailey	Catherine Bailey Ltd
<b>A TOUCH OF CLOTH (Series 2)</b>	Studio Director	Jim O'Hanlon	Zeppotron
<b>A YOUNG DOCTOR'S NOTEBOOK</b>		Alex Hardcastle	Big Talk Productions Ltd
<b>THE BLIND MAN OF SEVILLE</b>	Marta Jimenez	Pete Travis	Mammoth Screen Ltd
<b>MY SO CALLED LIFE SENTENCE</b>	Joan	Dewi Humphreys	BBC 2
<b>TWENTY TWELVE</b>	Interpreter	John Morton	BBC 4
<b>MY FAMILY</b>		Ed Bye	DLT for BBC 1
<b>HAPPY BIRTHDAY SHAKESPEARE</b>		Nick Hurren	BBC Television
<b>MARRIED. SINGLE. OTHER</b>	Louisa		Left Bank Pictures for ITV
<b>THE FORSYTHE SAGA</b>	Nuria	David Moore	Granada Television

## Stage

<b>Production</b>	<b>Character</b>	<b>Director</b>	<b>Company</b>
<b>MATES IN CHELSEA</b>	Simone Montesquieu	Sam Pritchard	Royal Court
<b>FANNY AND ALEXANDER</b>	Lydia Ekdahl/Justina	Max Webster	Old Vic

<b>Production</b>	<b>Character</b>	<b>Director</b>	<b>Company</b>
<b>SHRAPNEL</b>	Samira/Columnist/Reporter/Narrator	Mehmet Ergen	Arcola Theatre Production Company
<b>THE HACKNEY VALPONE</b>	Valtore/Nano	Anna Jones	Nylon Projects
<b>GIBRALTAR</b>		Robert Carson	Arcola Theatre Production Company
<b>MARE RIDER</b>	Selma	Mehmet Ergen	Arcola Theatre
<b>THERE IS A WAR / EDGAR AND ANNABEL</b>	Katie / Tara	Lyndsey Turner	National Theatre
<b>BITES</b>	Angelica / Mo / God's PA	Lisa Goldman	The Bush Theatre and Mama Quillo
<b>BLUE HEART</b>	Young Australian Woman	Max Stafford- Clark	Out of Joint / Royal Court Theatre
<b>CAHOOT'S MACBETH</b>	1st With, Murderer, Messenger	Becky Mills	King's Head Theatre
<b>COOL WATER MURDER</b>	Lisa	John Ginman	Coventry Belgrade Theatre
<b>CROCODILE SEEKING REFUGE</b>	Marie-Elena	Ariella Eshed	Lyric Hammersmith and Ice and Fire
<b>DEALING WITH CLAIRE</b>	Anna	Guy Retallack	Union Theatre
<b>HAMLET</b>	Ophelia	Stephen Jameson	Wild Thyme
<b>MACBETH</b>	Lady Mcduff / First Witch	Kath Rogers	Bristol Old Vic
<b>MRS PAT</b>	Sarah Bernhardt	Sun Dunderdale	York Theatre Royal
<b>PASSION</b>	Hanna	Malcolm Sutherland	Chelsea Theatre
<b>ROMEO &amp; JULIET</b>	Juliet	Guy Retallack	UK Tour
<b>SHOPPING AND F***ING</b>	Lulu	Max Stafford- Clark	Out of Joint / G & J Prods
<b>THE BOY WHO LEFT HOME</b>	Leah	Nick Philippou	ATC
<b>THE CONVICT'S OPERA</b>	Diana Trapes / Phebe	Max Stafford- Clark	Out of Joint and the Sydney Theatre Company
<b>TRIPS</b>	Nik	Jeremy Raison	Birmingham Rep

Production	Character	Director	Company
<b>WEDDING DAY AT THE CRO-MAGNONS</b>	Souhayla	Patricia Benecke	Soho Theatre
<b>WOODY ALLEN'S MURDER MYSTERIES</b>	Lucy	Janey Clarke	Croydon Warehouse

## Radio

Production	Character	Director	Company
<b>WELCOME TO IRAN</b>	Fatemeh	Nadia Fall	BBC Radio 3
<b>SOMETHING UNDERSTOOD THE HIDDEN 36</b>	Reader		Whistledown
<b>PLUM HOUSE</b>	Harriet		Hat Trick Productions Ltd/BBC Radio 4
<b>ROCK ME AMADEUS</b>	Mum	Sally Avens	BBC Radio 4

## Other

Production	Character	Director	Company
	Liverpool, Manchester, Mexican, Middle Eastern, RP (native), Spanish, West Country		
<b>ACCENTS</b>	American (New York, American Southern States) Cockney, East European, French, Irish (southern), Italian, Latin American		
<b>LANGUAGES</b>	English (mother tongue), French, Spanish		
<b>MUSIC &amp; DANCE</b>	Guitar, Jazz Singing, Mezo-Soprano, Piano, Flamenco, Lindy Hop		