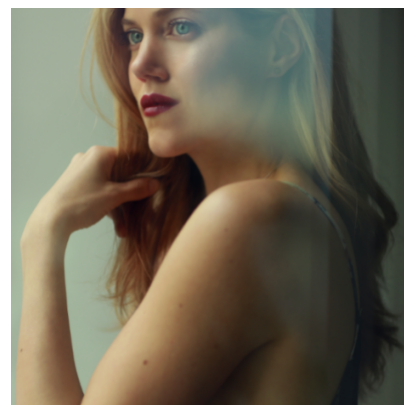


## Charity Wakefield



### Agents

Kirk Whelan-Foran

kwfoffice@unitedagents.co.uk

+44 (0) 20 3214 0800

+44 (0)7920713142

Assistant

Donovan Mathews

dmathews@unitedagents.co.uk

02032140800

Second Assistant

Ben Powney

bpowney@unitedagents.co.uk

### Roles

#### Film

Production	Character	Director	Company
<b>SCOOP</b>	Princess Beatrice	Philip Martin	The Lighthouse
<b>A MIDSUMMER NIGHT'S DREAM</b>	Quince	Casey Wilder Mott	Empyrean Pictures
<b>KILL SWITCH</b>	Mia	Tim Smit	FilmNation
<b>A MIDSUMMER NIGHT'S DREAM</b>	Quince	Casey Wilder Mott	Joshua Skurla and Douglas Matejka
<b>DAY OF THE FLOWERS</b>	Ailie	John Roberts	Rogue Elephant Pictures
<b>SERENA</b>	Agatha	Susanne Bier	Serena Productions
<b>THE RAVEN</b>	Fieldsmaid	James McTeigue	Intrepid Pictures
<b>SCAR TISSUE</b>	Sam	Scott Mitchell	Sterling Pictures
<b>EXITZ</b>	Billie	Laurens C Postma	Inspired Movies
<b>PAST PRESENT FUTURE IMPERFECT</b>	Beanie	Roger Thorpe	Fluidity Films

## Television

Production	Character	Director	Company
<b>THE GREAT (SERIES 2)</b>	Georgina Dymov	Zetna Fuentes	Thruline Entertainment
<b>THE GREAT (SERIES 1)</b>	Georgina Dymov	Matt Shakman	Thruline Entertainment
<b>SALVAGE</b>	Gwen	Uta Briesewitz	ABC Studios
<b>BOUNTY HUNTERS (SERIES 2)</b>	Leah	Toby MacDonald	Cavebear for Sky
<b>BOUNTY HUNTERS</b>	Leah	Will Sinclair	Cavebear for Sky
<b>EINSTEIN</b>	Betty Neumann	Ron Howard	National Geographic
<b>THE HALCYON</b>	Charity Lambert	Stephen Woolfenden	Left Bank
<b>DOCTOR WHO</b>	Lucy	Ed Bazalgette	BBC
<b>BROKEN (Pilot)</b>	Jules	Jeremy Podeswa	ABC Studios
<b>THE PLAYER</b>	Cassandra	Bharat Nalluri	NBC
<b>CLOSE TO THE ENEMY</b>	Julia	Stephen Poliakoff	BBC
<b>WOLF HALL</b>	Mary Boleyn	Peter Kosminsky	Company Pictures/BBC
<b>HIGH MOON</b>	Eve	Adam Kane	Universal
<b>MOCKINGBIRD LANE (PILOT)</b>	Marilyn	Bryan Singer	NBC
<b>AGATHA CHRISTIE'S MARPLE</b>	Molly Kendall	Charlie Palmer	ITV
<b>LEAVING</b>	Phoebe	Gaby Dellal	ITV
<b>ANY HUMAN HEART</b>	Land Fothergill	Michael Samuels	Carnival
<b>MIDSOMER MURDERS</b>	Ruth Lambert	Renny Rye	ITV
<b>LEGALLY MAD (PILOT)</b>	Brady	Kenny Ortega	NBC
<b>CASUALTY 1909</b>	Ethel Bennet	Bryn Higgins	BBC
<b>CASUALTY 1907</b>	Ethel Bennet	Bryn Higgins	BBC
<b>RAPUNZEL</b>	Rapunzel	Catherine Morshead	BBC
<b>SENSE AND SENSIBILITY</b>	Marianne	John Alexander	BBC
<b>JANE EYRE</b>	Miss Temple	Susanna White	BBC
<b>HEX</b>	Lucy	Brian Grant	Shine Productions
<b>STATE OF PLAY</b>	VO	David Yates	BBC

## Stage

Production	Character	Director	Company
<b>EMILIA (West End)</b>	William Shakespeare	Nicole Charles	Nica Burns
<b>EMILIA</b>	William Shakespeare	Nicole Charles	The Globe

<b>Production</b>	<b>Character</b>	<b>Director</b>	<b>Company</b>
<b>SEMINAR</b>	Kate	Terry Johnson	Hampstead Theatre
<b>THE BLACKEST BLACK</b>	Abi	Michael Longhurst	Hampstead Theatre
<b>CANDIDA</b>	Candida	Simon Godwin	Theatre Royal Bath
<b>THESE SHINING LIVES</b>	Catherine	Loveday Ingram	Park Theatre
<b>NO NAUGHTY BITS</b>	Nancy	Edward Hall	Hampstead Theatre
<b>THE CHERRY ORCHARD</b>	Anya	Howard Davies	National Theatre
<b>THE RIVALS</b>	Lydia Languish	Jessica Swale	Southwark Playhouse
<b>24 HOUR PLAYS: THIS ONE'S FOR YOU HULA GIRL</b>	Hula Girl	Claire Lizzimore	Old Vic
<b>BABY WITH THE BATHWATER</b>	Cynthia/Angela/MsP/Susan	Jonathan Loe	Old Red Lion
<b>OTHELLO</b>	Desdemona	Jo Howarth	Shakespeare's Globe Tour
<b>THE CIRCLE</b>	Elizabeth	Jonathan Church	Chichester Festival Theatre
<b>THE GRADUATE</b>	Elaine	Chris Garner	New Vic
<b>THE THREE MUSKETEERS</b>	Constance	Tim Sheader	Bristol Old Vic
<b>YESTERDAY WAS A WEIRD DAY</b>	Siobhan/Camilla/Baz/John	Mimi Poskitt	Edinburgh Festival /BAC
<b>IT'S YOUR FUNERAL BABY</b>	Sally Payne	Maria Pattinson/Susannah Waters	Soho Theatre
<b>PALESTINE YANI</b>	Basra Boy /Puppeteer	Maria Pattinson	Komedia
<b>THE SUICIDE</b>	Margarita	Joyce Branagh	B.A.C
<b>THE TEMPEST</b>	Ariel	George Peck	Pegasus Theatre

## Radio

<b>Production</b>	<b>Character</b>	<b>Director</b>	<b>Company</b>
<b>VOTES FOR WOMEN</b>	Jean	Marion Nancarrow	BBC Radio 3
<b>NATIONAL VELVET</b>	Meredith/Antonia	Melanie Harris	BBC Radio 4

## Other

<b>Production</b>	<b>Character</b>	<b>Director</b>	<b>Company</b>
<b>THE BIRTHDAY PARTY</b>	Meg	Katie Goodwin	Oxford School of Drama
<b>THE JEALOUS WIFE</b>	Lady Freelove	Jacque Crago	Oxford School of Drama
<b>THE MONEY SHOW</b>	Flower Bonham-Bon	William Kerley	Oxford School of Drama
<b>THE PROVOKED WIFE</b>	Mademoiselle	Jacque Crago	Oxford School of Drama
<b>THE THREE SISTERS</b>	Irena	Robert Fried	Oxford School of Drama
<b>TWELFTH NIGHT</b>	Viola	George Peck	Oxford School of Drama

## Short Film

<b>Production</b>	<b>Character</b>	<b>Director</b>	<b>Company</b>
<b>TUSCANY</b>	Woman	Geoffery Breton	Geoffery Breton
<b>WRAPS</b>	Ivy	Frank Tamburin	Charity Wakefield
<b>THE BEACHCOMBERS</b>	Claire	Michael Berliner	Silvertip Films

## Additional information

Violin (Grade 5); B.A.D.C. Stage Fighting Certificate; Accents: Native RP, Strong accent skills; Strong Soprano; Full Clean Driving License.